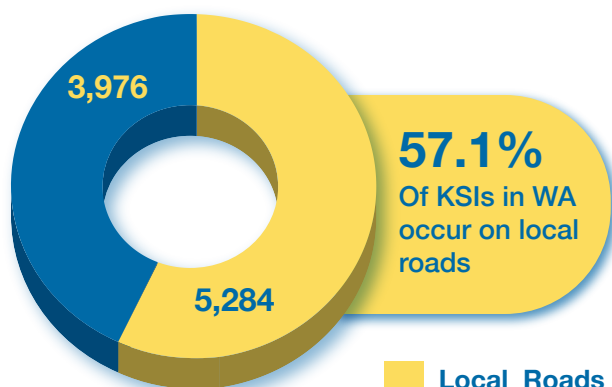


Road Safety Performance Local Government Roads 2015-2019

July 2022

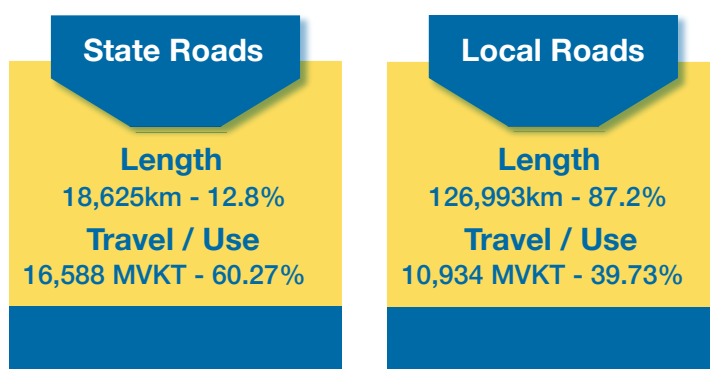
All of Western Australia

Killed & Seriously Injured

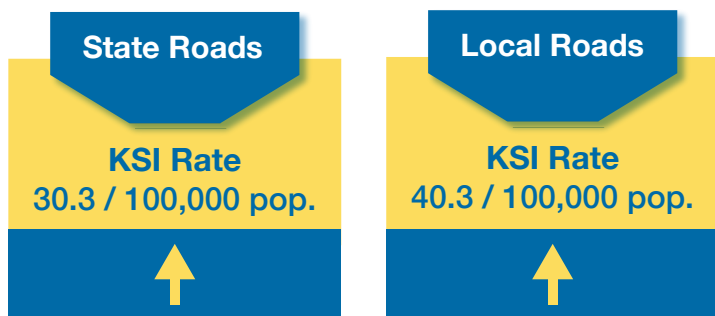


Local Roads
State Roads

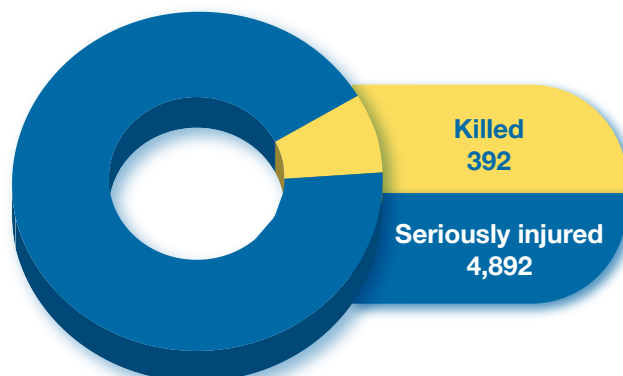
Road Network



Safety Performance

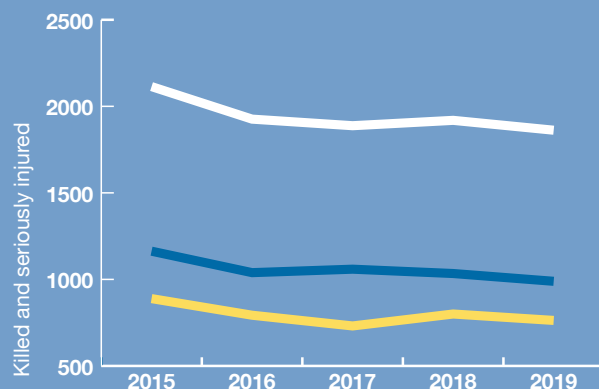


Local Roads



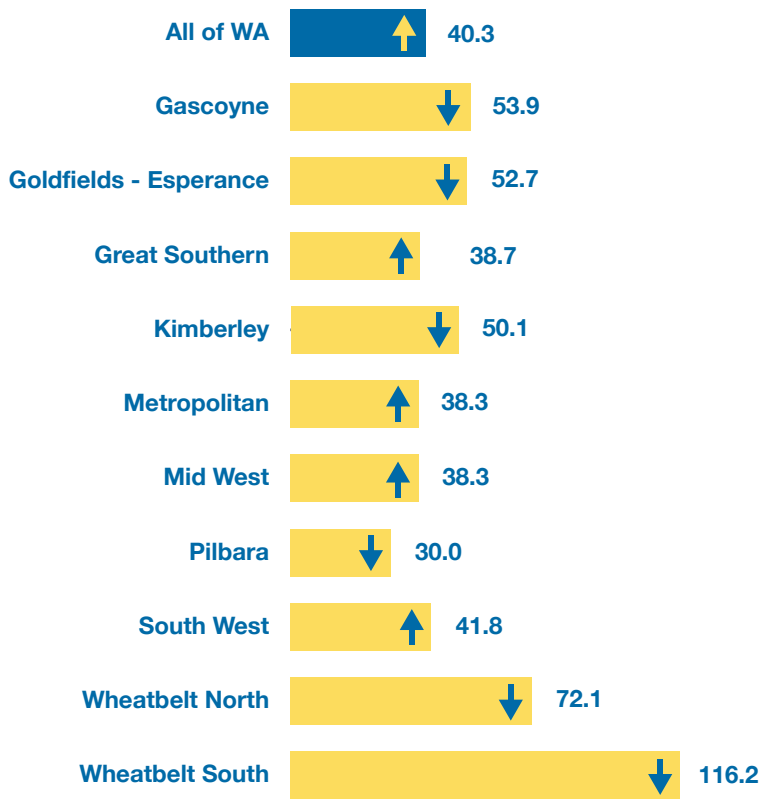
Average Cost Per Annum
\$928.8M Local Roads

Trend





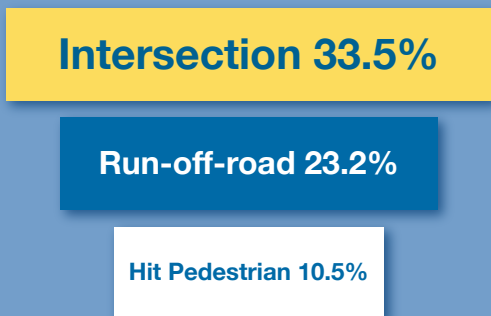
Average Annual KSI Rate per 100,000 Population by Region



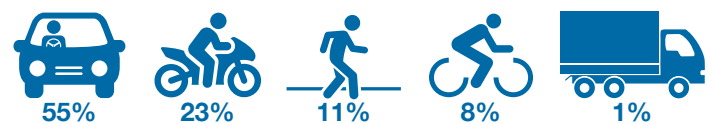
Crash Type

Crash Type	KSI	% KSI Crashes	Change from 2014 - 18
Right Angle	1,191	22.5%	↑
Off Carriageway Hit object	1,064	20.1%	↓
Right Turn Thru	578	10.9%	↑
Hit Pedestrian	557	10.5%	↓
Rear End	510	9.7%	↓
Non-collision	472	8.9%	↑
Head On	235	4.4%	↓
Sideswipe	194	3.7%	↑
Off Carriageway Non-collision	164	3.1%	↓
Other	139	2.6%	↓
Hit Object	138	2.6%	↑
Hit Animal	472	0.8%	→
Total	5,284	100%	

Priority Treatment Areas



Road User Type



Primary source: Government of Western Australia, Road Safety Commission, December 2021

Data to be read in conjunction with supporting notes