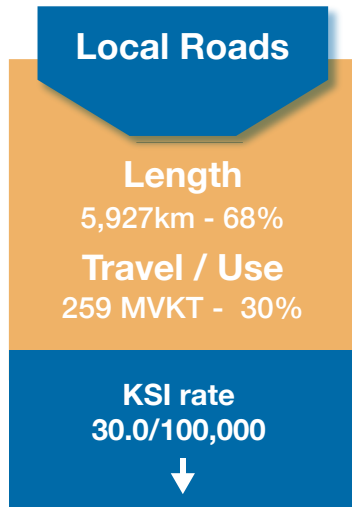
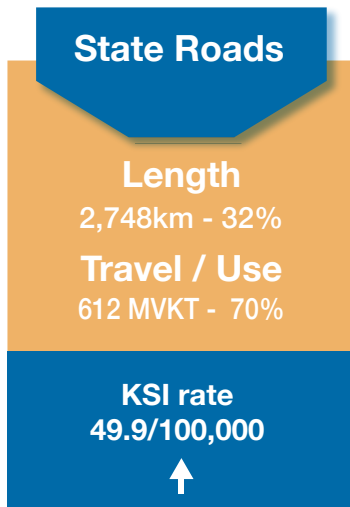


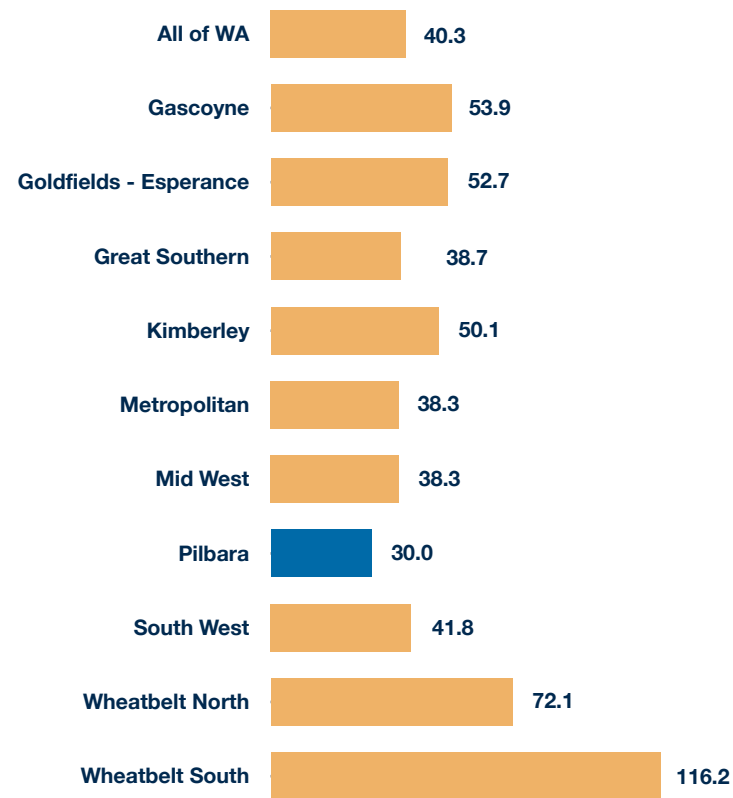


# Road Safety Performance Local Government Roads 2015-2019 Pilbara Region

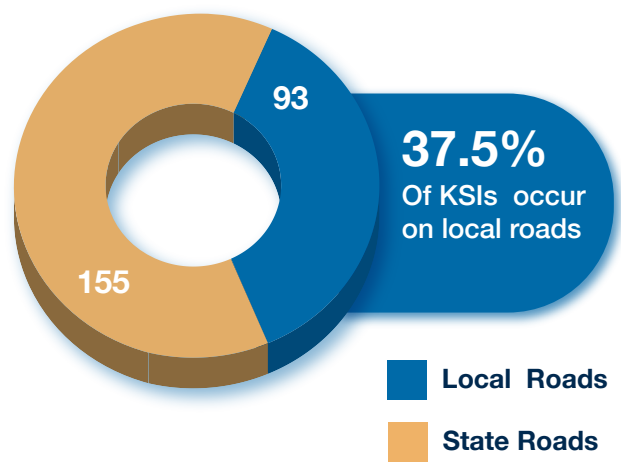
July 2022



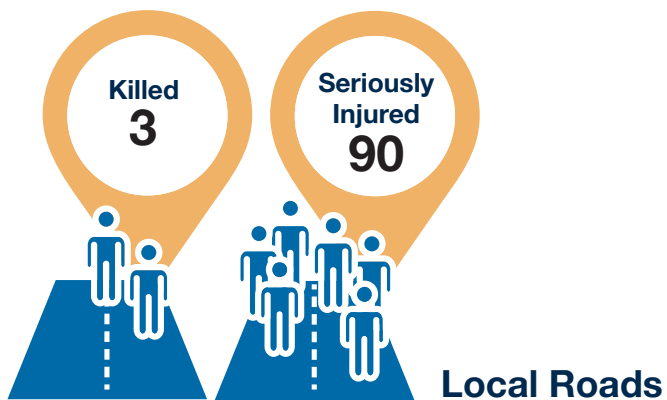
## Average Annual KSI Rate per 100,000 Population by Region



## Killed & Seriously Injured



www.roadwise.asn.au  
roadwise@walga.asn.au  
(08) 9213 2000



### Killed & Seriously Injured by Local Government

Local Government	Killed	Seriously injured	Total KSI
Ashburton	0	11	11
East Pilbara	0	12	12
Karratha	0	40	40
Port Headland	3	27	30
<b>Total</b>	<b>3</b>	<b>90</b>	<b>93</b>

### Crash Type

Crash Type	KSI	% KSI Crashes	Change from 2014 - 18
Off Carriageway Hit object	21	22.6%	↓
Hit Pedestrian	18	19.4%	↓
Non-collision	17	18.3%	↓
Right Angle	14	15.1%	↓
Rear End	6	6.5%	→
Hit Object	4	4.3%	↑
Right Turn Thru	4	4.3%	↓
Off Carriageway Non-collision	3	3.2%	↓
Sideswipe	3	3.2%	→
Other	1	1.1%	↓
Head On	1	1.1%	↓
Hit Animal	1	1.1%	→
<b>Total</b>	<b>93</b>	<b>100%</b>	

### Priority Treatment Areas

**Run-off-road 25.8%**

**Intersection 19.4%**

**Hit Pedestrian 19.4%**

Primary source: Government of Western Australia, Road Safety Commission, December 2021

Data to be read in conjunction with supporting notes