



WALGA's RoadWise

Showcase Guide 2019

Working Together to Prevent Road Trauma



www.roadwise.asn.au



WALGA acknowledges the support of the Ministers and the Western Australian Government.

Funding from the Road Trauma Trust Account and the State Road Funds to Local Government Agreement enables the delivery of RoadWise.




RoadWise®



WALGA

RoadWise is funded by the State Government and supported by Local Governments
www.roadwise.asn.au



About WALGA's RoadWise

RoadWise is WALGA's Local Government and Community road safety program and has been in operation since 1994.

As part of WALGA, RoadWise is uniquely placed to work with Local Governments, as road asset managers, planning authorities, fleet operators and community leaders.

The Program works to take action to prevent road trauma, through community level engagement and the provision of advice, support, tools and training designed to:



Inform and engage Local Governments in road safety policy and practice.



Build the capacity of communities to effectively contribute to the delivery of the WA road safety strategy.



Facilitate and mobilise Local Governments and communities, through a coordinated approach, to implement effective and sustainable local road safety activities.

For more information, visit www.roadwise.asn.au.

Our Plan for Progress

Priority focus areas for WALGA's RoadWise:



RoadWise Testimonials



Cr Peter Robinson, Shire of Dardanup and Chairman, South West Regional Road Group.

"I attended the Road Safety Council's Road Safety Leadership Program organised by the Road Safety Commission in 2018, at the invitation of WALGA's RoadWise.

It was the best, most informative, hugely engaging and transformative learning opportunity I have encountered in my eight years as a Councillor.

It has changed my approach as the Chair of the South West Regional Road Group (RRG). I have been able to introduce discussion and information related to the Zero Approach to road safety into our meetings.

As a member of our Dardanup RoadWise Committee I have used the greater knowledge and understanding acquired through the program to further spread the Towards Zero message.

I have also encouraged two other RRG participants to participate in the RSC Road Safety Leadership Program."



"Safety is a priority for all who use our roads. I'm pleased to be able to contribute to safer roads through our RoadWise Committee."

Alan Hortin, Chairperson, Albany RoadWise Committee and road safety volunteer.



"Drivers along the Gibb River Road are always happy to stop for a break, a good chat and some refreshments at our Driver Reviver operation."

Robyn, Wayne and Elsia, Gibb River Road Driver Reviver volunteers.



"I am passionate about keeping people safe in Carnarvon and am pleased to be able to work with our RoadWise Committee to help work Towards Zero."

Andrea Pitcher, Carnarvon RoadWise Committee.

Regional Road Groups

Regional Road Groups (RRGs):

- Assess Local Government road funding needs
- Prioritise road projects and Black Spot Projects
- Recommend Local Government road funding priorities to the State Road Funds to Local Government Advisory Committee, and
- Monitor the implementation of the Local Government Road Program in their region.

Regional Road Groups are comprised of Elected Members from each Local Government represented within the road group.

Most RRGs are supported by a technical committee comprised of Local Government staff.

RoadWise team members participate in RRG meetings and can provide assistance and support to Local Governments with the Black Spot Programs.

Main Roads WA provides technical and administrative support to RRGs.

RoadWise: Supporting Regional Road Group Leadership

In 2018 and 2019, WALGA's RoadWise (in conjunction with the Road Safety Commission) enabled a number of RRG Chairpersons to participate in the Road Safety Leadership Program.

RoadWise Regions



RoadWise Regions

People killed and seriously injured 2013-2017

5,399

*Road safety activities 2018-19

Kimberley

109

- Population of 36,762
- 440,056 sq kms
- 655 kms sealed, 4,158 kms unsealed roads
- 72 road safety activities*
- 493 network members



Pilbara

139

- Population of 61,802
- 504,383 sq kms
- 705 kms sealed, 5,070 kms unsealed roads
- 135 road safety activities*
- 481 network members



Gascoyne

39

- Population of 10,020
- 130,863 sq kms
- 528 kms sealed, 3,735 kms unsealed roads
- 86 road safety activities*
- 190 network members



RoadWise Regions

Mid West

113

- Population of 53,526
- 293,401 sq kms
- 3,082 kms sealed, 13,852 kms unsealed roads
- 46 road safety activities*
- 590 network members



Goldfields- Esperance

161

- Population of 55,980
- 949,000 sq kms
- 1,576 kms sealed, 16,273 kms unsealed roads
- 145 road safety activities*
- 429 network members



Wheatbelt South

130

- Population of 20,569
- 57,386 sq kms
- 3,841 kms sealed, 13,192 kms unsealed roads
- 39 road safety activities*
- 430 network members



Wheatbelt North

217

- Population of 51,128
- 100,032 sq kms
- 6,519 kms sealed, 17,287 kms unsealed roads
- 59 road safety activities*
- 589 network members



RoadWise Regions

Metropolitan North

- Population of 989,647
- 2,712 sq kms
- 6,814 kms sealed, 120 kms unsealed roads
- 341 road safety activities*
- 1,000 network members



3,817

Metropolitan South

- Population of 962,009
- 2,687 sq kms
- 6,941 kms sealed, 154 kms unsealed roads
- 375 road safety activities*
- 918 network members



South West

558

- Population of 281,958
- 29,194 sq kms
- 6,102 kms sealed, 4,524 kms unsealed roads
- 194 road safety activities*
- 477 network members



Great Southern

116

- Population of 62,519
- 53,000 sq kms
- 3,099 kms sealed, 9,380 kms unsealed roads
- 37 road safety activities*
- 460 network members



Project Coordination and Campaign Delivery

WALGA's RoadWise coordinates a number of projects and facilitates the delivery of statewide road safety campaigns.

Child Car Restraint Project

Coordination of the Type 1 Child Car Restraint Fitting Service includes:

- providing accredited training,
- maintaining a dedicated information line and website,
- data collection, and
- ongoing support of trained fitters.



Driver Reviver and Coffee Stop Programs

Driver Reviver and Coffee Stop aim to address fatigue-related road crashes, encouraging travellers to take regular breaks by visiting an operating site.

RoadWise coordinates both Programs in WA, including recruitment, applications and ongoing support for operators and providers.



Project Coordination and Campaign Delivery

RoadWise coordinates two annual community-based road safety campaigns – the **Road Ribbon for Road Safety®** campaign in the lead up to Christmas and the **Blessing of the Roads** campaign around Easter.

RoadWise designs resources which are made available to Local Governments, State Government agencies, local businesses, community groups, non-government organisations and individuals.

Both campaigns run statewide but are localised, to emphasise the importance of road safety in communities.



Road Ribbon for Road Safety® and Blessing of the Roads campaigns



Supporting Implementation

Developing Tools and Resources

Having access to resources, skills and knowledge assists Local Governments and their communities to identify and effectively address local road safety issues. It can also be the impetus for people to get involved in local road safety activities.



Tools and Resources

WALGA's RoadWise develops road safety resources specifically for Local Government, including the *Local Government Safe System Toolkit*, the *Safe System Guiding Principles for Local Government*, the *Local Government Fleet Safety Kit*, *Black Spot Program Kit* and the *Road Safety Around Schools Guidelines* as well as fact sheets, toolkits and other resources.

Supporting Implementation

Courtesy Speed Display Signs

WALGA's RoadWise has a set of courtesy speed display signs (CSDS) which Local Governments can loan, in support of speed management activities that reduce the risk and severity of road crash injury.

Since July 2017, the CSDS have been loaned by **20** Local Governments, across **seven** regions.



Policy Development, Leadership and Advocacy

The RoadWise Program works to inform and engage Local Governments in road safety policy and practice.

The development of a variety of policy, practice and procedure tools assists Local Governments and the community to take the lead in bringing about positive change in road safety at the local level.



Policy Development, Leadership and Advocacy

RoadWise is working with Local Governments to set road safety targets and adopt the safe system approach.

Activity to date includes having fleet safety policies, signing the *Declaration of Road Safety*, developing Council road safety action plans, and implementing policies to provide access to safe vehicles for the community.

Priority focus areas include:

- Improving and nurturing the skills of the RoadWise network for safe system aligned project planning.
- Promoting and advocating the adoption and application of safe system principles and practice by Local Governments.
- Proactively engaging Local Governments in safe system conversations and actions.
- Creating a supportive environment for policy change and community action.



The RoadWise Team



Ian Duncan
Executive Manager,
Infrastructure



Terri-Anne Pettet
Manager,
RoadWise Program



Engel Prendergast
Senior Road Safety
Consultant



Katherine Celenza
Road Safety Advisor
Metro North



Cliff Simpson
Road Safety Advisor
Wheatbelt North



Rodney Thornton
Road Safety Advisor
Wheatbelt South



Samantha Adams
Road Safety Advisor
Mid West



Greg Hayes
Road Safety Advisor
Kimberley



Carol-Anne Bradley
Road Safety Advisor
Goldfields-Esperance



Nicky Smith
Road Safety Advisor
South West



Carl Beck
Road Safety Advisor
Great Southern

The RoadWise Team



Tammie Deshon
Road Safety Project
Officer



Kylie O'Driscoll
Road Safety Project
Officer



Matt Martinovich
Road Safety Project
Officer



Louise Russell-Weisz
Road Safety Project
Officer



Erin Miller
Road Safety Project
Officer



Andrea Smithson
Road Safety Project
Officer



Mal Shervill
Road Safety Policy
Officer



Audra de Pina
Administration Officer



www.roadwise.asn.au

The RoadWise Team



Ian Duncan, Executive Manager Infrastructure

Ian has been with WALGA since 2007. His current role focuses on policy and programs covering roads, transport services, road safety and asset management. Prior to this he was responsible for economic and financial sustainability policy at WALGA.

Ian was the State Landcare Coordinator for Western Australia from 2005 to 2007. He has an extensive career in management roles for companies in the Wesfarmers group, operating in the industrial chemicals and fertilisers industries.

Ian has an honours degree in agricultural economics and holds post-graduate qualifications in business and geographical information science.

Terri-Anne Pettet, RoadWise Program Manager

Terri-Anne Pettet, Manager of RoadWise and first joined WALGA in 1998 as the Road Safety Advisor in the Mid West region.

Terri-Anne has a Bachelor of Science in Health Promotion and is a Graduate of the Australian Institute of Company Directors. She has been involved in various aspects of road safety: research, policy development, strategic and operational program planning and delivery, since 1997.

Terri-Anne is the Local Government deputy member to the Road Safety Council of WA and a Director on the Board of Injury Matters.



Louise Russell-Weisz, Road Safety Project Officer

Louise first joined the Program in 2001 as the Regional Road Safety Officer in the Kimberley and as a Safe System Coordinator until 2013. She returned to the Program in 2017 and currently works as a Road Safety Project Officer in policy development and advocacy.

Louise holds a Bachelor of Health Science in Health Promotion, a Certificate IV in Workplace Training and Assessment, and has a background in Dental Therapy and Health Promotion.

Erin Miller, Road Safety Project Officer

Erin joined the Program in 2012 as the Road Safety Advisor in the Great Southern. Erin's current position as Road Safety Project Officer involves resource development and developing demonstration projects.

With a Master of Arts (Honours) degree and an extensive background in hospitality and high level events, Erin has a strong understanding of the community and stakeholders.



The RoadWise Team



Engel Prendergast, Senior Road Safety Consultant

Engel joined the RoadWise Program in 1999 and has held various roles, including Administration Officer, Regional Road Safety Officer, Project Officer (Community Grants and Child Car Restraints) and Regional Team Leader. Engel is currently the Senior Road Safety Consultant, responsible for the Pilbara, Gascoyne and Metropolitan South regions.

With a Bachelor of Health Science in Health Promotion and Sports Science, Diploma of Counselling and a Certificate IV in Training and Assessment, Engel also volunteers at Lifeline WA as a Crisis Supporter.

Katherine Celenza, Road Safety Advisor (Metropolitan North)

Katherine joined the RoadWise Program in October 2017 as the Road Safety Advisor for the Metropolitan North region.

Katherine holds a Bachelor of Science (Exercise and Health Science) and has experience working with Local Governments and local communities (including indigenous and culturally and linguistically diverse (CALD) groups) through her previous roles with Kidsafe WA and the Royal Lifesaving Society.



Nicola (Nicky) Smith, Road Safety Advisor (South West)

Nicky joined the RoadWise Program in March 2017 as the Road Safety Advisor for the South West region.

With a Bachelor of Social Science (Human Services) and a Certificate IV Workplace Assessment & Training, Nicky has extensive experience in the not-for-profit sector in community development and management, has worked with a range of target groups, has held health promotion roles working for the Greater Bunbury Division of General Practice and was instrumental in establishing the Headspace Bunbury Centre for youth mental health, sexual health, alcohol and other drugs.

Carl Beck, Road Safety Advisor (Great Southern)

Carl joined the RoadWise Program in August 2019 as the Road Safety Advisor for the Great Southern region.

With a Diploma of Management and a Certificate IV in Conservation and Land Management, Carl has experience working in State Government and Local Governments across the state from Shark Bay to Albany, largely in community service and development roles, including serving as the Albany TravelSmart Officer.



The RoadWise Team



Greg Hayes, Road Safety Advisor (Kimberley)

Greg worked with the RoadWise Program from 2007 until 2011 and returned in 2016 as the Road Safety Advisor for the Kimberley Region.

With a 30-year career in media, including print, radio and television and a 20-year career in the Australian Defence Force (Army Reserve), Greg also brings extensive regional knowledge to the role, having lived in the Kimberley for 30 years.

Samantha (Sam) Adams, Road Safety Advisor (Mid West)

Sam joined the RoadWise Program in October 2011 as the Road Safety Advisor for the Mid West region.

With a background in community development in both the City of Greater Geraldton and Alice Springs, Sam has a strong understanding of the challenges faced by remote and rural communities.



Carol-Anne Bradley, Road Safety Advisor (Goldfields-Esperance)

Carol-Anne joined the RoadWise Program in May 2018 as the Road Safety Advisor for the Goldfields-Esperance region.

With a Bachelor of Education and a Certificate IV Training and Assessment, Carol-Anne has a background in education and teaching, and experience in road safety education through her previous roles as the School Drug and Road Aware (SDERA) Regional Consultant (Goldfields) and former Chair of the Kalgoorlie-Boulder RoadWise Committee.

Cliff Simpson, Road Safety Advisor (Wheatbelt North)

Cliff joined the RoadWise Program in 2010 as the Road Safety Advisor for the Wheatbelt North Region.

With qualifications in front line management, Cliff has extensive experience in project management and development, as well as strong networks across the Wheatbelt region.



The RoadWise Team



Rodney Thornton, Road Safety Advisor (Wheatbelt South)

Rodney joined the RoadWise Program in 2014 as the Road Safety Advisor for the Wheatbelt South region.

Born and bred in the Wheatbelt, Rodney has strong networks within the region across Local Governments, sporting clubs and community groups and brings strong regional knowledge to the role.

Kylie O'Driscoll, Road Safety Project Officer

Kylie joined the Program in 2006 as the Road Safety Project Officer, responsible for promotion of Program achievements and the development of publications, tools and resources.

With a Bachelor of Social Science (Politics and Economics), a Diploma in Marketing (Public Relations) and extensive experience within the Local Government sector, Kylie has a strong understanding of how Local Governments and their communities work, and expertise in the development of effective communication strategies.



Matt Martinovich, Road Safety Project Officer

Matt Joined the Program in 2019 as the Road Safety Project Officer, responsible for project and campaign coordination including Driver Reviver, Coffee Stop, Blessing of the Roads, Road Ribbons for Road Safety and the Local Government Road Safety Awards, as well as compiling RoadWise reports.

Matt has a background in education with a Bachelor of Physical and Health Education and a Diploma of Secondary Education.

Tammie Deshon, Road Safety Project Officer

Tammie joined the Program in 2011. Tammie's role encompasses coordinating the Type 1 Child Car Restraint Fitting Service. This includes training and providing ongoing development of a network of Type 1 Fitters.

Tammie has a background in health promotion with experience as an Immunisation Officer and as a Road Safety Officer in the United Kingdom.



The RoadWise Team



Andrea Smithson, Road Safety Project Officer

Andrea joined the Program in 2008 and has held a number of roles including Regional Road Safety Officer for the Great Southern, Safe System Coordinator and currently Road Safety Project Officer working on resource and demonstration project development.

With a Bachelor of Science in Health Promotion and experience in a range of health areas, Andrea brings rich and diverse knowledge and skills to the team.

Mal Shervill, Road Safety Policy Officer

Mal joined WALGA as the Road Safety Policy Officer in 2011.

Mal works with Local Governments to provide support in road safety policy development and delivery.



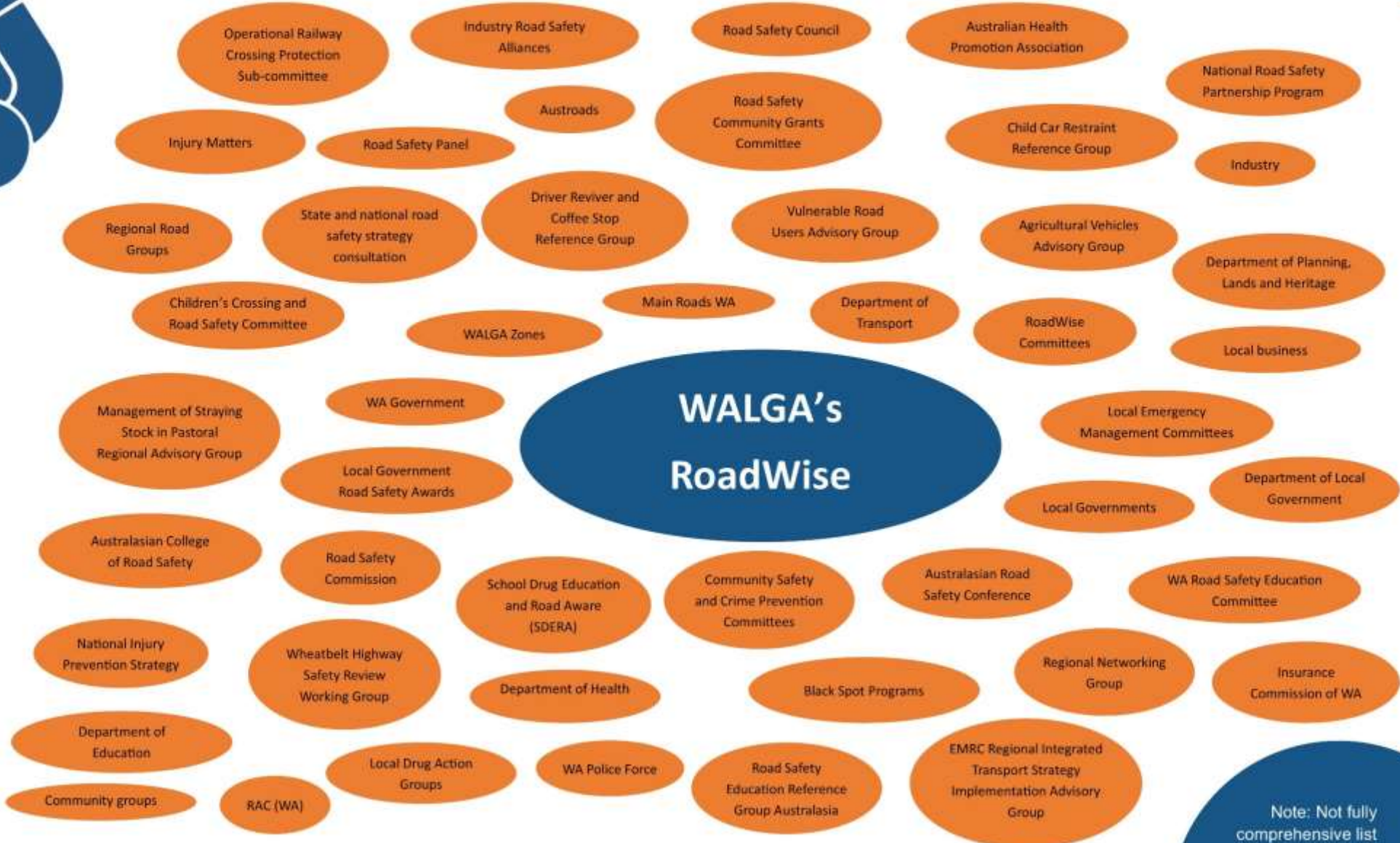
Audra de Pina, Administration Officer Infrastructure

Audra has been with WALGA since 2016. Her role provides administrative support to the Infrastructure team, including travel coordination, assisting with RoadWise campaigns and assisting with the development of the *Road Assets and Expenditure Report* and other publications. Audra also uses her photography skills to support the development of WALGA publications.

Audra's previous experience includes many years as a Senior Project



RoadWise Links



Note: Not fully comprehensive list